

CALIMA

PROJECTS INC.

CALIMA PROJECTS INC.

17 Grandview Grove
Calgary Alberta, Canada T3Z 0A7

phone: 403-969-0654
email: info@calima.ca
website: www.calima.ca

Composite Electrical Enclosures Model CPI-96

In today's dynamic electrical, energy and communications markets, metal fabricated enclosures often suffer from damage such as rust and corrosion. This is especially evident in harsh weather conditions and hazardous environments. Replacing outdoor panels every few years is costly and time consuming.



CALIMA® composite enclosures offer a solution to these environmental and logistical challenges.

CONSTRUCTION: composite, polymer resin + glass=extremely durable and strong. Long life span. Will not rust. Good for extreme environments.

DESIGN: clean and efficient, functional with double doors and louvered panels.

SECURITY & MAINTENANCE: moulded double doors. 3-point keyed lock system.

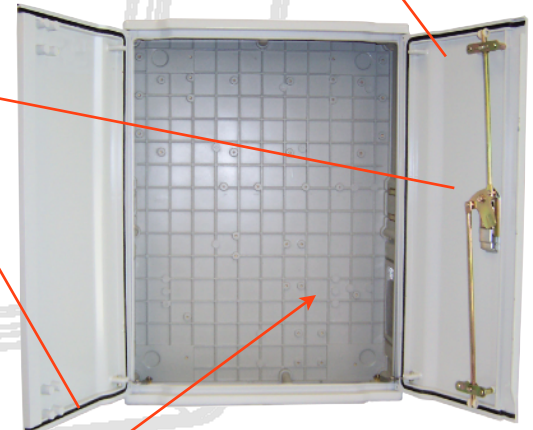
GASKET: neoprene closed cell seal provides excellent weather protection.

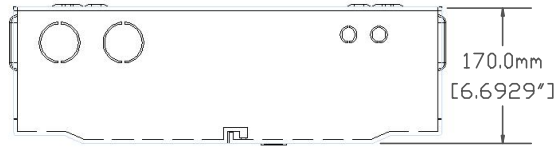
PAINT: Lead-free, UV-rated paint for additional protection.

INSTALLATION: wall mounted, pole mounted.

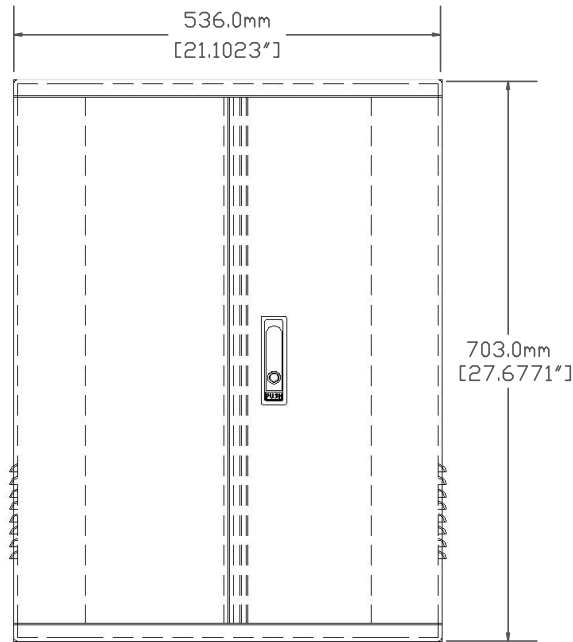
FASTENERS: quick install for dinrail and/or component installation

ACCESSORIES: wall- or pole-mounting brackets.

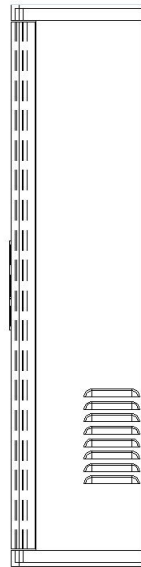




TOP



FRONT



RIGHT



Specifications:

- Rating:** Type 3R
- Grade:** GB4208-IP65
- Construction:** Polymer Resin +Glass Composite
- Flame Resistance:** FVO Level
- Environmental Temperature:** -40°C to +60°C
- Load Bearing Capacity:** Exterior >980N GEMEL <200N
- Relative Humidity:** <95% (+40°C)
- Dimensions:** L20.5"/W06.75"/H17.75"
- Metric:** L520.7mm/W171.5mm/H450.9mm



CALIMA® composite enclosures are manufactured to withstand extreme weather conditions. Unique molded composite forms provide **CALIMA®** enclosures with aesthetic design, strength, durability and functionality. Composite construction allows for fast easy on-site installation. Versatile mounting options allow panels to be wall mounted, pole mounted or base wire-way mounted. **CALIMA®** Composite Enclosures provide a reliable, cost-effective, long-term solution for electrical enclosure requirements.